



Innovation  
that excites

# ALL NEW NISSAN TEANA





## PREMIUM LOUNGE IN MOTION

Feel the remarkable smooth riding sensation in the All New Nissan Teana. Just sit back and enjoy every journey in its new lavish exterior design and premium class comfort interior that enhances your prestigious lifestyle.



TEANA



25XV

ALL NEW  
TEANA

STRONGEVO

## NEW IMPRESSION ON DETAILS

All New Nissan Teana appears with elegant curves and sleek design in every detail to catches the eyes.



### NEW 3 DIMENSIONS CHROMIUM GRILLE

Stately front grille with three-dimensional design that reflects of modern luxury.

### NEW XENON PROJECTOR LENS HEAD LAMP

New automatic adjustable Xenon Projector Lens Head Lamp for the exquisite appearance in style.



### NEW FOG LAMP DESIGN

Well designed to perfecting new elegant front look.



### NEW LED REAR LAMP

Innovative rear lamp with LED technology for sophisticated impression and clear light for noticeable effect.

### NEW 17" ALLOY WHEEL DESIGN

Elegantly designed to enhances the classy exterior impression.





ALL NEW NISSAN TEANA



**NEW** ATMOSPHERE OF COZINESS

Enjoy every journey in its peaceful and relaxing grand cabin, equipped with new practical and advanced features that setted to indulges your private moments.



Beige interior color unavailable for Pearl White.

ALL NEW NISSAN TEANA



## ULTIMATE DRIVING INDULGENCE

New dynamic dashboard design equipped with hi-tech control panel to gives you the most appealing experience behind the wheel.



Black interior color available for Pearl White.

ALL NEW NISSAN TEANA

## NEW DASHBOARD & CONTROL PANEL



### NEW STEERING SWITCH AUDIO CONTROL

The new multi-entertainment switch control just on the tip of your finger for the real driving pleasure.



### NEW HEAD UNIT

Indulges your private moments with New Head Unit design and technology, also equipped with air conditioner and high class audio system control.

### NEW METER CLUSTER WITH INTELLIGENT 3D DISPLAY

New modern and visible Meter Cluster supported with a new advanced Intelligent 3D Display 4" screen that gives you all important driving information.





Beige interior color unavailable for Pearl White.

ALL NEW NISSAN TEANA

# NEW ADVANCED FEATURES

## NEW INTERIOR COLOR

Extraordinary interior color with premium material that gives luxurious and coziness.



## ELECTRIC ADJUSTABLE SUNROOF

A sunroof panel equipped with UV protection shade and automatically controlled by electronic system.

## ARM REST

A center Arm Rest with cup holder on passenger seat for more comfortable and exclusive touch.



## CENTER CONSOLE BOX

Hidden storage at the center for easiness accessibility for both driver and front seat passenger.



## GLOVE BOX

Multi-purpose glove box with lid, designed for great utility and convenience.



## LARGER BAGGAGE IN ITS CLASS

It's able to load much items of your hobby or travel needs. The space can be expanded larger to rear seat area.



## DOOR POCKET

Reachable storage in the door panel for bottle and other simple item.



### NEW INTELLIGENT 3D DISPLAY

The Advanced Drive-Assist Display to shows all important information on driving through a giant 4 inches-3D Display screen.



### NEW SOUND SYSTEM BY BOSE®

Enjoy the powerful sound system with sound quality of BOSE®, equipped with subwoofer and 9 speakers around the car. It's allows you to relax with your favorite songs along the ride.



### REAR VIEW CAMERA

The head unit monitor display will show the rear view while you driving in reverse for easy back observation.



### REVERSE SYNCHRONIZED DOOR MIRROR

The opulent style turn signal gives you clear and better vision to make the most of your safety driving.

### MEMORY SEAT

Memory Seat system for the driver seat, which can record 2 positions and connects with your personal intelligent key. As a result, there is no need to waste time in adjusting the seat every time the driver is changed.



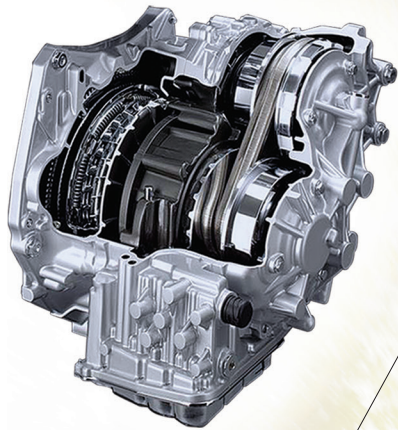
### AIR CONDITIONER & AUDIO SYSTEM

Be comfortable and relaxing with the air-conditioning system, by which the temperature can be adjusted in response to the need of the driver and front seat passenger, and also be entertaining by all functions through radio and 5 inches head unit, to be used with CD and MP3, together with USB and Aux-in ports all through the drive.



## **NEW** EXCELLENT DRIVING SENSATION

All New Nissan Teana delivers the latest technology and performance for your ultimate driving satisfaction.



### **NEW** XTRONIC CVT

New intelligent transmission system that able to increases acceleration rate also gives the real smooth driving sensation and improves fuel efficiency.



### **NEW** QR25DE ENGINE

Supported with the new powerful engine performance 4-cylinder, in-line, 16 Valve, 172 PS, Torque 23.8 kg-m. It is also combined with Twin CVTC (Twin Continuously Variable-valve Timing Control) for intake and exhaust.

### TWIN CVTC SYSTEM

Twin CVTC (Continuously Variable-valve Timing Control) system controls the open-close timing of the valves by arranging proper cams degree in each level of engine rotation and acceleration.





ALL NEW NISSAN TEANA





## REFLECTION OF PREMIUM TASTE

The masterpiece of elegance design reflects a new level of modern luxurious lifestyle.



# PEACE OF MIND IN EVERY JOURNEY

Maximum safety features of All New Nissan Teana gives you more confidence and secure feeling in every journey.



ALL NEW NISSAN TEANA

# ADVANCED SAFETY FEATURES



## START ENGINE BUTTON

The power is on your finger tip. Just by a gentle touch, you can easily turn on or off the engine.



## INTELLIGENT KEY & IMMOBILIZER SYSTEM

Intelligent key allows you to lock or unlock doors as well as the trunk with ease, and be more secured with immobilizer.

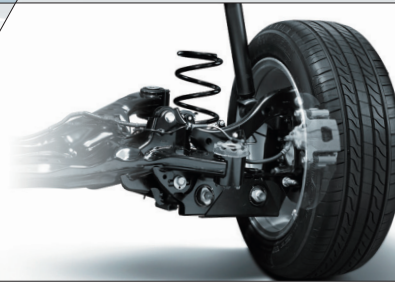
## D PLATFORM, X-TYPE COWL TOP

Safe Design technology of the car with safety in X-Type is similar to sport car. Cabin is made of UHSS (Ultra High Strength Steel) that sturdy until 980 Mpa, light in weight, shock proof and good torsion.



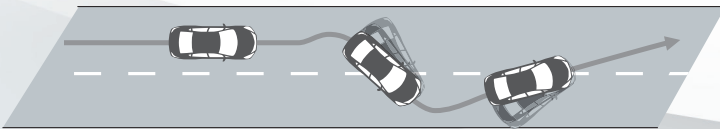
## NEW SUSPENSION SYSTEM

The lower suspension system of Macpherson strut independent front suspension with stabilizer steel bar and rebound spring enhances smooth ride, more stability and better road traction, for remarkable smooth and comfortable riding.



## VDC (VEHICLE DYNAMIC CONTROL)

The stability control system that ensures confident turn and responds rapidly while driving around the curve in high speed.

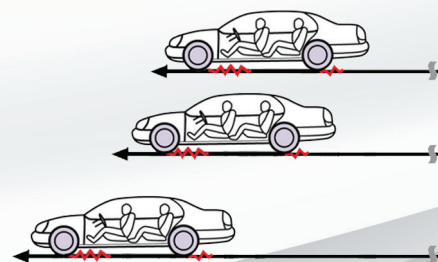
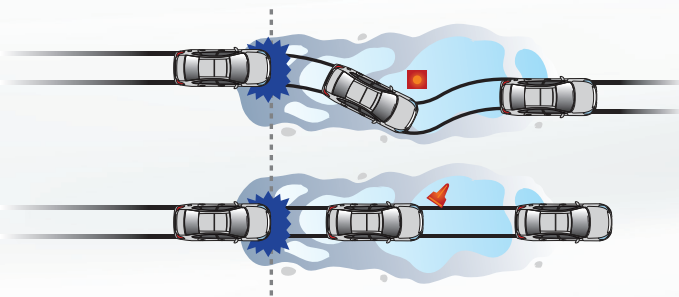




**DUAL SRS AIRBAG, SIDE, & CURTAIN AIRBAG**

Carefully designed for safety of all passengers with front and side SRS Airbag, as well as curtain airbag in 6 points to absorb the impact for driver and front passenger, as well as to reduce impact from side collision.

**EBD (ELECTRONIC BRAKE-FORCE DISTRIBUTION)**



Helps to bring balance in distributing brake oil between front and rear wheels. It reduces fishtail in emergency brake and enhance confident control at all situation.

**ABS (ANTI-LOCK BRAKING SYSTEM) & BA (BRAKING ASSIST)**

Improves the performance of wheels during emergency braking. As a result, the brake distance will be reduced by 10-15%.

# ALL NEW NISSAN TEANA

## BODY COLORS



PEARL WHITE \*



BRILLIANT SILVER \*\*



BLACK STAR \*\*

- **NEW** XENON PROJECTOR LENS HEAD LAMP • **NEW** 3 DIMENSIONS CHROMIUM GRILLE • **NEW** FOG LAMP DESIGN
- **NEW** LED REAR LAMP • **NEW** 17" ALLOY WHEEL DESIGN • **NEW** STEERING SWITCH AUDIO CONTROL • **NEW** HEAD UNIT
- **NEW** METER CLUSTER WITH INTELLIGENT 3D DISPLAY • **NEW** INTERIOR COLOR
- **NEW** SOUND SYSTEM BY BOSE® • **NEW** XTRONIC CVT • **NEW** QR25DE ENGINE • **NEW** SUSPENSION SYSTEM

\* Only Available with Black Interior \*\* Only Available with Beige Interior

# SPECIFICATION

| TYPE   |               | 2.5 XV  |
|--|---------------|---|
| <b>DIMENSION</b>                                       |               |   |
| Length   | mm            | 4,875   |
| Width  | mm            | 1,833   |
| Height   | mm            | 1,490   |
| Wheelbase  | mm            | 2,775   |
| Front/Rear Tread                                       | mm            | 1,585/1,585   |
| Ground Clearance                                       | mm            | 135   |
| Trunk  | L (VDA)       | 488   |
| Curb Weight  | kg            | 1,510   |
| Min. Turning Radius                                    | m             | 5.7   |
| Wheel  |               | 17" Alloy   |
| Tire   |               | 215/55R17   |
| Fuel Tank Capacity                                     | l             | 65  |
| <b>MECHANICAL FEATURES</b>                             |               |   |
| Code   |               | QR25DE  |
| Type   |               | In-line 4 DOHC 16 Valve Twin CVTC                               |
| Engine Displacement                                    | cc            | 2,488   |
| Bore x Stroke  | mm            | 89.0 x 100.0  |
| Power  | kW (PS)/rpm   | 127(172)/6,000  |
| Torque   | Nm (kg*m)/rpm | 234(23.8)/4,000   |
| Transmission   |               | XTRONIC CVT   |
| Power Steering   |               | HEPS (Hydraulic Electric Power Steering System)                 |
| Brake  | Front<br>Rear | Ventilated Disc<br>Disc   |
| Suspension   | Front<br>Rear | Independent Strut with Stabilizer<br>Multi-link Independent     |
| <b>EXTERIOR</b>  |               |   |
| Sunroof One Touch                                      |               | •   |
| Head Lamp Type   |               | Xenon (Projector type)  |
| Head Lamp Auto On/Off Function                         |               | •   |
| Head Lamp Auto Levelizer                               |               | •   |
| Head Lamp Washer                                       |               | •   |
| Front Fog Lamp   |               | •   |
| Front Wiper  |               | Variable Intermittent with Rain Sensor                          |
| Electric Adjustable and Electric Foldable Door Mirror  |               | With Reverse Synchronized and Position Memory                   |
| Side Turning Lamp in Door Mirror (LED Type)            |               | •   |
| <b>INTERIOR</b>  |               |   |
| Leather Steering Wheel                                 |               | •   |
| Tilt and Telescopic Steering Adjustment                |               | •   |
| Steering Wheel Switch                                  |               | Audio, Meter Display, Cruise Control and Bluetooth              |
| 3D TFT Color Meter                                     |               | Linked with Center Display and Steering Switch                  |
| Cruise Control   |               | •   |
| Eco Mode Button  |               | •   |
| Push Start Button                                      |               | •   |
| Intelligent Key  |               | Synchronize with Memory Function                                |
| Speed Sensing Auto Door Lock                           |               | •   |
| Inside Rear View Mirror Auto Dimming                   |               | •   |
| Power Window with Anti-jam Protection at Driver Window |               | •   |
| Leather Seat   |               | •   |
| Driver Seat Adjustment                                 |               | 8-way Power with Lumbar Support                                 |
| Assistant Seat Adjustment                              |               | 4-way Power   |
| Memory Seat with 2 Memory for Driver                   |               | •   |
| Rear Arm Rest with Cup Holder                          |               | •   |
| Rear Seat 60:40 Folding                                |               | •   |
| Dual Zone Auto AC with Climate Control                 |               | •   |
| Rear AC Duct   |               | •   |
| Power Rear Sunshade                                    |               | •   |
| LED Mood Lamp Interior Illumination                    |               | •   |
| <b>AUDIO</b>   |               |   |
| Head Unit  |               | 5" color display, AM/FM, 1 CD, MP3, Aux, Speed Sensitive Volume |
| Bose® Premium Audio System                             |               | •   |
| Speaker  |               | 9   |
| USB Connectivity in Front of Console with Illumination |               | •   |
| Bluetooth  |               | •   |
| <b>SAFETY</b>  |               |   |
| SRS Airbag   |               | Driver and Assistant  |
| Side Airbag  |               | •   |
| Curtain Airbag   |               | •   |
| Immobilizer and Anti Theft Alarm                       |               | •   |
| TCS  |               | •   |
| VDC with Active Understeer Control                     |               | •   |
| Hill Start Assist                                      |               | •   |
| ABS  |               | •   |
| EBD  |               | •   |
| BA   |               | •   |
| Front & Rear Parking Sensor                            |               | Synchronize with TFT Meter                                      |
| Rear View Camera                                       |               | •   |

• PT NISSAN MOTOR INDONESIA reserves the rights to alter any details of specification and equipment without prior notice • Specifications and detail may differ from the picture shown, depending on models.

## NISSAN PRODUCT QUALITY POLICY

To provide each of our customers with a consistently high level of quality, we apply the same high quality standard worldwide ensuring that all Nissan owners enjoy peace of mind for the lives of their vehicles.



Authorized Nissan Dealer

PT NISSAN MOTOR DISTRIBUTOR INDONESIA  
www.nissan.co.id

**NISSAN**

